

UNITED STATES DISTRICT COURT
FOR THE DISTRICT OF PUERTO RICO

_____)	
UNITED STATES OF AMERICA,)	
)	
Plaintiff,)	
)	
v.)	
)	CIVIL ACTION NO. 3:15-CV-02283
)	
PUERTO RICO AQUEDUCT AND)	
SEWER AUTHORITY and the)	
COMMONWEALTH OF PUERTO)	
RICO,)	
)	
Defendants.)	
_____)	

FIRST MODIFICATION OF CONSENT DECREE

WHEREAS, on May 23, 2016, this Court entered a Consent Decree (“Decree”) in this action between the United States, the Puerto Rico Aqueduct and Sewer Authority (“PRASA”), and the Commonwealth of Puerto Rico (collectively the “Parties”), to resolve civil claims alleged in a complaint filed by the United States.¹ The complaint alleged that PRASA violated the Clean Water Act (“CWA”), 33 U.S.C § 1251, et seq., with regard to 52 PRASA wastewater treatment plants (“WWTPs”) and their associated wastewater collection systems, 768 wastewater pump stations, 119 water treatment plants (“WTPs”), and PRASA’s Puerto Nuevo Regional WWTP (“RWWTP”) Sewer System.

WHEREAS, the Decree requires extensive injunctive relief to be performed throughout Puerto Rico. Generally, the Decree requires the following actions:

¹ Capitalized terms not otherwise defined herein shall have the meanings set forth in the Decree.

- Submission of bi-annual reports detailing the status and/or progress of the actions taken in compliance with the Decree and submission of several reports proposing actions by PRASA. For instance, specific to the Puerto Nuevo RWWTP Sewer System, PRASA is required to submit a Nine Minimum Controls (“NMCs”) Report addressing comments from EPA and demonstrating the status of PRASA’s compliance with each of the NMCs for combined sewer overflows (“CSOs”) as set forth in EPA’s 1994 CSO Control Policy.
- Specific remedial measures at WWTPs and sludge treatment systems (“STs”) at certain WTPs and implementation of several projects at the Puerto Nuevo RWWTP Sewer System.
- The remedial measures at the WWTPs (estimated in 2015 to cost \$140 million) include the following types of remedial measures: perform studies in the Sewer System to determine infiltration and inflow (“I/I”) into WWTPs; Perform I/I Corrections in the Collection Systems; rehabilitate/install sewer lines; replace/install equipment at WWTPs; and eliminate and divert WWTP discharges to other facilities.
- The remedial measures at the STs (estimated in 2015 to cost \$75 million) include the following types of measures: eliminate WTPs; construct new STs; and rehabilitate WTPs.
- With respect to the Puerto Nuevo RWWTP Sewer System, PRASA is required to develop and implement a Sewer System Operation and Maintenance Plan (“S2OMP”) to properly eliminate sanitary sewer overflows (“SSOs”) and Unauthorized Releases, and control CSOs. The Decree requires PRASA, among other things, to conduct sewer reconnaissance of all sewers hydraulically connected to the Puerto Nuevo RWWTP Sewer System, including undertaking efforts to eliminate blockages and overflows within the system. PRASA is required to complete reconnaissance and cleaning of all such sewers less than 30 inches in diameter in priority areas (identified in map attached as Appendix L of the Decree) within three years from the Date of Lodging. If, during the Sewer System Reconnaissance and Cleaning in the priority areas, it is determined that a sewer with a diameter of greater than 30 inches is the cause of SSOs in the areas identified in Appendix L of the Decree, PRASA is required to modify its Sewer System Reconnaissance and Cleaning schedule to include cleaning of such sewer pipes with a diameter of greater than thirty (30) inches or sections thereof.
- PRASA is also required to implement an Integrated Maintenance Program for the WWTPs and associated pump stations; Fats, Oil and Grease (FOG) program; Spill Response and Cleanup Plan (“SRCP”), and reporting using the EPA Reporting Form for SSOs and Unauthorized Releases, and Training for its employees.
- PRASA is also required to provide EPA certain financial information on an annual basis. PRASA must provide the following: annual financial report, any rating agency reports received during the previous year, projected budget for next fiscal year, its debt service coverage ratio, senior lien coverage ratio, liquidity, any approved future rate increases, key financial ratios monitored internally and for lender(s), current bond ratio and

ratings, number of customers by service pipe, and other financial information requested by EPA.

WHEREAS, PRASA has asserted that circumstances beyond its control, including hurricanes Irma and María (the “Hurricanes”), as well as changed financial circumstances, have made it difficult to comply with certain requirements of the Decree, including the deadlines for certain projects.

WHEREAS, the United States has agreed, pursuant to Paragraphs 37 and 134 of the Decree, to extend the deadlines for certain projects.

WHEREAS, the Parties have agreed to certain other revisions of the Decree in order to improve its effectiveness and clarity.

NOW, THEREFORE, the Decree is modified by agreement of the Parties, which have entered into this First Modification of Consent Decree (“Modification”), as follows:

1. Paragraph 7.u of the Decree defines “Pump Station” and refers to Appendix F (List of WWTP Pump Stations Covered by Consent Decree). Attached hereto at Appendix 1 is a revised Appendix F, which shall replace Appendix F of the Decree.

2. Paragraph 8 of the Decree requires PRASA to implement certain remedial measures (projects) related to its WTPs by certain deadlines set forth in Appendix H of the Decree (Base List for Remedial Measures to address Washwater Discharges at WTPs). Five of the six projects have been completed. One project, which involves the replacement of the Ceiba Sur WTP with the new Valenciano WTP (or alternative project to eliminate the Ceiba Sur WTP), was to be completed by a December 2020 deadline. The deadline for completion of this project is extended to May 31, 2027. Certain additional remedial measures needed at other WTPs in light of the destruction caused by the Hurricanes are listed at Appendix 2 of this

Modification with their corresponding completion dates (along with measures to be implemented at the WWTPs).

3. Paragraph 18 of the Decree requires PRASA to implement certain remedial measures related to its WWTPs by certain deadlines set forth in Appendix J of the Decree (Base List for Remedial Measures for WWTPs). PRASA has completed ten of the seventeen projects. The compliance dates for seven of the projects not yet completed are modified as set forth in Table 1 below:

Table 1. Revised Compliance Dates for Certain Appendix J Projects

Region	Facility	Project Description	Estimated Cost to Complete	Compliance Date
East	Rio Grande Estates	Divert facility to the private CBUC plant or the Carolina/Fajardo WWTP	\$10,241,368	December 31, 2023
East	Caguas	Aguas Buenas/Caguas Sanitary Trunk Sewer Collection System	\$19,021,118	December 31, 2025
Metro	Puerto Nuevo	Installation of degritter system	\$29,253,546	March 31, 2025
Metro	Bayamón	Overall improvement project: Influent headworks, influent pumps, grit removal system, and clarifier's travelling bridges	\$12,789,458	December 31, 2024
South	Patillas	Divert facility to Guayama Regional WWTP	\$31,926,113 (trunk sewer) and \$90,414,628 (other improvements)	December 31, 2026

South	Ponce	Phase II: Rehabilitation of trunk sewer (28 km)	\$12,960,150	July 31, 2025
West	Isabela	Diversion of the Isabela WWTP discharge to Aguada WWTP	\$90,000,000	December 31, 2028

In addition, Paragraph 18 and Appendix J of the Decree are revised to add the seventeen new Appendix J Projects set forth in Table 2 below:

Table 2 – New Appendix J Projects

Re-gion	Facility	Project Description	Estimated Cost to Complete	Compliance Date
North	Arecibo	Diversion of the Arecibo WWTP discharge to Barceloneta WWTP	\$22,059,496	December 31, 2030

South	Guayama	Improvements to Guayama WWTP: Replace the existing influent screens and relocate screenings dumpsters to increase solids removal and improve operational conditions. Improvements to Influent Pump Station. Demolish existing degritting units and influent channel and replace with new vortex type degritting units. Demolish both existing primary clarifiers and build two new circular primary clarifiers with the design flow capacity and capable of receiving wasted activated sludge from the secondary treatment. Improvements to secondary biological treatment. Improvements to disinfection system	\$80,180,336	October 31, 2026
South	Peñuelas	Elimination of Peñuelas WWTP: Divert facility to Ponce WWTP or Rehabilitation of Peñuelas WWTP	\$27,700,000	March 31, 2026
South	Guayanilla	Elimination of Guayanilla WWTP: Divert facility to Ponce WWTP or the more accessible or feasible WWTP	\$17,793,414	December 31, 2027
West	Mayagüez	Improvements Mayagüez Outfall: Perform structural repairs to existing outfall	\$20,000,000	December 31, 2028
North	Camuy	Improvements Camuy Outfall: Perform structural repairs to existing outfall or divert facility to Barceloneta WWTP	\$27,000,000	December 31, 2030

East	Caguas	Improvements to Caguas WWTP (Repair Primary Clarifier #2)	\$18,000,000	October 31, 2028
East	Comerio	Clarifiers Rehabilitation Project (Repair Primary Clarifier # 1)	\$543,445	December 31, 2024
East	Vieques	Vieques WWTP Improvements (Replace Aeration Tank Air Diffusers)	\$25,000,000	December 31, 2027
Metro	Enrique Ortega	Rehabilitation of the Enrique Ortega Water Treatment Plant (STS, Repair filter press)	\$135,642,406	July 31, 2028
North	Corozal	Divert facility to Barceloneta WWTP (Replace Grit Transmission #1, Replace Comminutor # 1 and #2 and Replace flow distribution bar (splitter box) and replace Grit Transmission # 2)	\$5,000,000	December 31, 2030
West	Aguada	Rehabilitation of Aguada WWTP (Repair clarifier units, replace chlorine contact chamber valves, repair influent pump #4)	\$16,000,000	December 31, 2028
West	Maricao	Rehabilitation of Maricao WTP (STS, Repair drying beds)	\$6,000,000	October 31, 2027
West	Mayagüez	Mayagüez WWTP Improvements (Repair Primary Clarifier #1 scum collector and replace weirs at Clarifiers #1 and #2 and replace Primary Clarifiers bridges)	\$61,004,319	December 31, 2028
North	Dorado	New Dorado Trunk Sewer (Replace Rake Screen # 1)	\$23,769,521	December 31, 2024
North	Morovis Sur	Rehabilitation of Morovis WTP (STS, Repair Centrifuge)	\$31,040,527	December 31, 2026

West	Aguadilla	Rehabilitation of Aguadilla Montaña WTP (STS, Repair Thickener and Rehabilitate Sludge Drying Beds)	\$18,000,000	December 31, 2028
------	-----------	---	--------------	-------------------

Paragraph 18 is also revised to add certain remedial measures that are needed in light of the impact of the destruction caused by the Hurricanes. These additional remedial measures are listed at Appendix 2 of this Modification, with their corresponding completion dates (along with measures to be implemented at the WTPs).

4. Paragraph 21 of the Decree requires PRASA to comply with all the requirements of its NPDES permit for the Puerto Nuevo Combined Sewer System, including requirements concerning Combined Sewer System discharges as described by the “Combined Sewer Overflows – Guidance for Nine Minimum Controls”. EPA 832-B-95-003, May 1995 (“NMC Guidance”). Paragraph 21 is modified to add the following additional requirements related to Nine Minimum Controls compliance in connection with the Puerto Nuevo Combined Sewer System: (a) PRASA shall perform inspection and cleaning and other necessary maintenance of sewers and manholes located at the Puerto Nuevo Combined Sewer System on an appropriate schedule considering (i) monitoring, (ii) modeling or (iii) historic maintenance problems related to FOG, debris, solids, sand, roots and/or any other obstructions; and (b) within six months of the Court’s approval of this Modification, PRASA shall provide the general public with information, to be available on PRASA’s website, concerning where CSOs occur at the Puerto Nuevo RWWTP Combined Sewer System, the dangers posed by interacting with sewage resulting from such CSOs, methods for reporting CSO activations, and PRASA’s

efforts to control CSOs. The information on PRASA's website described above shall be readily accessible, searchable, and clearly labeled.

5. Paragraph 21 of the Decree requires PRASA to file NMC Reports by November 30 of each year until the Decree terminates. Paragraph 21 of the Decree also provides that PRASA may submit the Combined Sewer System Characterization, Monitoring, and Modeling Report ("CMMR") with the NMC Report as long as the document has distinct sections for each report. Paragraph 22 of the Decree requires PRASA to submit an S2OMP Annual Report by January 30 of each year until the Decree terminates. PRASA submitted a document on May 31, 2019 that included all three of these reports and revised electronic maps of the Puerto Nuevo RWWTP Sewer System in GIS format. PRASA also filed consolidated reports in May of 2020, 2021 and 2022. Paragraphs 21 and 22 of the Decree are modified to provide that all three of the aforementioned reports shall be submitted in a single document, with separate sections for each report, on or before May 31 of each year until the Decree is terminated. Likewise, Paragraph 35 of the Decree is modified to provide that revised electronic maps of the Puerto Nuevo RWWTP Sewer System in GIS format shall be submitted to EPA on or before May 31 of each year.

6. Paragraph 23 of the Decree requires PRASA to implement Sewer System Reconnaissance of all of the sewers hydraulically connected to the Puerto Nuevo RWWTP Sewer System to enable complete inspections, observation and cleaning of the sewers. During Sewer System Reconnaissance, PRASA must undertake appropriate efforts to eliminate blockages and overflows within the Puerto Nuevo RWWTP Sewer System in accordance with the Sewer System Spill Response Clean-up Plan ("SRCP"). Paragraph 25 of the Decree requires PRASA to complete the Sewer System Reconnaissance of all sewer pipes, including

the trunk sewer pipes of Miramar, Old San Juan and Hato Rey (San José), in the areas identified in Appendix L (“Priority Areas”) of the Decree, and cleaning of sewer pipes with a diameter less than 30 inches in those areas, by September 15, 2018. Paragraph 25 of the Decree also requires PRASA to modify its Sewer System Reconnaissance and Cleaning schedule to include cleaning of sewer pipes with a diameter greater than 30 inches or sections thereof if PRASA determines that any such sewer pipes were the cause of SSOs in the Priority Areas. Paragraphs 23 and 25 of the Decree are modified to require that PRASA, with respect to such sewer lines, complete the Sewer System Reconnaissance in accordance with the schedule set forth in Table 3 below and the map attached as Appendix 3 of this Modification and implement sewer Cleaning if required by Paragraphs 8 and 9 below.

Table 3. Reconnaissance of Remaining Portions of Equal or Greater than 30-inch in Diameter Sewer Lines in Priority Areas

Phase	Description	Compliance Dates
Phase 1 – East Area	Portion of sewer line depicted on map attached as Appendix 3 denoted as Phase 1 – East Area (generally sewers extending from Eduardo Conde Avenue to the Martín Peña Channel, including several segments in the Ponce de León Avenue)	09/30/23
Phase 2 – Baldorioty Area	Portion of sewer line depicted on map attached as Appendix 3 denoted as Phase 2 – Baldorioty Area (generally sewers extending from Ramón Baldorioty de Castro Avenue to Franklin D. Roosevelt Avenue)	12/31/24

Phase 3 – San Jose Area	Portion of sewer line depicted on map attached as Appendix 3 denoted as Phase 3 – Baldorioty Area (generally sewers Southwest of Ramón Baldorioty de Castro Avenue)	06/30/26
-------------------------	---	----------

7. Paragraph 26 of the Decree provides that PRASA shall, no later than six months prior to concluding the Sewer System Reconnaissance and Sewer Cleaning in the Priority Areas, submit to EPA for review and approval a schedule for completing the Sewer System Reconnaissance and Sewer Cleaning of the PRASA sewers hydrologically connected to the Puerto Nuevo RWWTP Sewer System located outside of the Priority Areas. PRASA has submitted to EPA a map of the areas of the Puerto Nuevo RWWTP Sewer System not included in the Priority Areas and has proposed a schedule for the Sewer System Reconnaissance and Sewer Cleaning of those areas. Paragraph 26 of the Decree is modified to include a schedule to complete the Sewer System Reconnaissance and Cleaning in the areas set forth in the maps attached as Appendix 4 of this Modification (Maps of Areas Remaining of Puerto Nuevo RWWTP Sewer System) in accordance with the schedule set forth in Table 4 below. For sewer lines that are less than 30 inches in diameter, PRASA shall complete a Sewer System Reconnaissance and Cleaning by the deadlines set forth in Table 4. For sewer lines that are equal to or greater than 30 inches in diameter, PRASA shall complete a Sewer System Reconnaissance by the deadlines set forth in Table 4 and, after completing the Reconnaissance, shall implement sewer Cleaning if required by Paragraphs 8 and 9 below.

Table 4: Completion Dates for the Four Remaining Areas of the
Puerto Nuevo RWWTP Sewer System

AREAS	COMPLETION DATE
Area 2	June 30, 2025
Area 3	June 30, 2028
Area 4	June 30, 2031
Area 5	December 31, 2033

8. With respect to all sewer lines that are equal to or greater than 30 inches in diameter that PRASA has already investigated pursuant to Paragraph 23-25 of the Decree, or that PRASA will investigate in the future pursuant to Paragraphs 6 and 7 above, PRASA shall implement Cleaning of any segment of such lines (portion of sewer from one manhole to the next manhole) where the investigation indicated (or indicates) that FOG, debris, solids, sand, roots and/or any other obstructions (a) have caused or contributed to an SSO, DWO, or Unauthorized Release at the location of the obstruction or at any other location in the Sewer System, or (b) are likely, based on a consideration of (i) monitoring, (ii) modeling or (iii) historic maintenance problems related to FOG, debris, solids, sand, roots and/or any other obstructions, to cause or contribute to a future SSO, DWO or Unauthorized Release at the location of the obstruction or at any other location in the Sewer System. Within 90 days of the Court's approval of this Modification, PRASA shall submit to EPA, for review and approval, a priority scheduling methodology for determining if, where and when Cleaning (and re-inspection) is required for such sewer lines ("Priority Methodology for Cleaning") based on the

information obtained during the System Reconnaissance. At least 30 days before PRASA submits the proposed Priority Methodology for Cleaning to EPA for review and approval, PRASA and EPA shall meet and discuss what PRASA intends to include in the submission. PRASA shall begin implementing the Priority Methodology for Cleaning 90 days after receiving an approval in writing from EPA.

9. With respect to the sewer lines that are equal to or greater than 30 inches in diameter that PRASA has already investigated pursuant to Paragraphs 23-25 of the Decree, or that PRASA will investigate in the future Pursuant to Paragraphs 6 and 7 above, PRASA shall submit to EPA, for review and approval, based on the Priority Methodology for Cleaning, a Report and Cleanup Plan presenting the results of the Reconnaissance, and indicating whether, as a result of the (i) monitoring, (ii) modeling, or (iii) historic maintenance problems related to FOG, debris, solids, sand, roots and/or any other obstructions, PRASA has already cleaned or will clean any portion of the sewer and, if so, on what schedule. PRASA shall submit such Report and Cleanup Plan for the 30-inch and greater diameter sewers previously investigated in the Priority Areas within 90 days of EPA's approval of the Priority Methodology for Cleaning. PRASA shall submit such Report and Cleanup Plan for the 30-inch and greater in diameter sewers in the Priority Areas not yet investigated by September 30, 2026. PRASA shall submit such Report and Cleanup Plan with respect to the 30-inch and greater in diameter sewers in Area 2 by September 30, 2025, in Area 3 by September 30, 2028, in Area 4 by September 30, 2031, and in Area 5 by March 31, 2034. If PRASA determines, at any time, that a blockage in any sewer pipe, regardless of diameter, is causing an active SSO or Unauthorized Release at that location or any other location in the Sewer System, PRASA shall implement the actions required by its Spill Response and Cleanup Plan, as required by Paragraph 62 of the Decree.

10. Paragraph 27 of the Decree requires PRASA to collect and retain certain information concerning the condition of the sewers and to provide, in each Bi-annual Report, a description of all sewer defects found during the prior six-month period during the Sewer System Reconnaissance that hinder the operation of the Sewer System. Paragraph 27 is revised to require that PRASA provide, in each Bi-Annual Report, a description of all sewer defects that hinder or are likely, based on (a) monitoring, (b) modeling or (c) historic maintenance problems related to FOG, debris, solids, sand, roots and/or any other obstructions, to hinder the operation of the Sewer System. Paragraph 27 is further revised to require that PRASA provide, in each Bi-Annual Report, the following information for each such defect: the Unique Asset Identifier, the Defect Location and Coordinates, the Date of Discovery, the Date Corrected for defects that have been corrected, the Defect Description, the presence of an active SSO or not, the Defect Status, and the Next Planned Action (including date for repair or re-inspection). PRASA shall also include in each Bi-annual Report a separate table that shows only the defects not yet corrected. In each Bi-annual Report submitted by PRASA after the Court's approval of this Modification, PRASA shall provide an update of both of these tables. If requested by EPA, PRASA shall provide to EPA, within 60 days of the request, the results of the application of the Sewer Defect Repair and Re-inspection Criteria, set forth at Appendix 5 of this Modification, and the Priority Methodology for Cleaning as well as any other information considered by PRASA in determining the priority and schedule for repairs, re-inspection or Cleaning.

11. Paragraph 27 of the Decree further provides that PRASA must correct, within one year of discovery, any defects found during the Sewer System Reconnaissance that hinder the operation of the Sewer System, and that if PRASA does not intend to replace or repair such

defects within one year, PRASA is to provide EPA an explanation for the delay. Paragraph 27 further provides that EPA, in its sole discretion, not subject to dispute resolution, shall determine whether a delay beyond one year is acceptable, and that if EPA agrees that the defect need not be repaired or replaced within a year, PRASA shall include the project in its Prioritization System. The process described above is modified as follows. With respect to all defects discovered by PRASA during the Sewer System Reconnaissance that hinder or, based on (a) monitoring, (b) modeling or (c) historic maintenance problems related to FOG, debris, solids, sand, roots and/or any other obstructions, are likely to hinder the operation of the Sewer System, PRASA shall apply the Sewer Defect Repair and Reinspection Criteria, set forth at Appendix 5 of this Modification, and shall rely primarily on the results of that analysis to determine the priority of repairs as well as the dates of the repairs or, if a repair is not planned, the dates and frequency of re-inspections. As provided in Paragraph 10 above, PRASA shall report the priority of repairs or, if a repair is not planned, the dates and frequency of re-inspections, in each Bi-annual Report. If EPA does not agree with the proposed repair/replacement, Cleaning or re-inspection dates or frequency (or that re-inspection is appropriate as opposed to repair/replacement or Cleaning) or with the priority accorded a particular defect, EPA and PRASA shall meet within 45 days of the submittal of the Bi-annual Report to discuss the appropriate schedule or priority for such repair/replacement or re-inspection (including whether re-inspection is appropriate as opposed to repair/replacement or Cleaning). EPA's decision concerning the issue shall be subject to dispute resolution under Section XXXI (Dispute Resolution) of the Decree.

12. Paragraph 28 of the Decree requires that PRASA, within three years of the Date of Lodging of the Decree, begin reporting the amount of wet weather and dry weather

discharges from CSO Outfalls, including estimated flow. Paragraph 28 also requires that PRASA, if it determines that reporting flow is not feasible as of the reporting date, explain to EPA in a written submission why such reporting is not feasible and the date when such reporting will be available for all of the CSO Outfalls. PRASA informed EPA in the Biannual Progress Report #8, submitted on November 1, 2019, that, based on the results of a pilot study, such flow reporting was not yet technically feasible. PRASA has continued to investigate flow reporting options, but has not provided EPA with a date by which such reporting will be available. Paragraph 28 is modified to require that, by May 31, 2025, PRASA have a calibrated and validated sewer system model for the Puerto Nuevo RWWTP Sewer System that enables PRASA to estimate, based on CSO outfall level monitoring and sewer system modeling, the volume of each CSO discharge.

13. Paragraph 30.e of the Decree requires PRASA to report in its Bi-annual Reports the following information with respect to the Puerto Nuevo RWWTP Sewer System: the location (including physical address and coordinates) of all SSOs, DWOs, and/or Unauthorized Releases within the prior six months, the dates of corrections, and any SSO, DWO or Unauthorized Release that has not been corrected during the prior six-month period, and the reason(s) why such SSO, DWO or Unauthorized Release has not been corrected. Paragraph 30.e of the Decree is revised to require that PRASA report the following additional information with respect to the Puerto Nuevo RWWTP Sewer System: (a) the date and time that PRASA discovered the SSO, DWO or Unauthorized Release; (b) the estimated flow rate of the SSO or Unauthorized Release; (c) the diameter of the pipe for the SSO or Unauthorized Release; (d) the cause of the SSO, DWO or Unauthorized Release; and (e) the date and time that the SSO, DWO or Unauthorized Release ended. For any SSO, DWO or Unauthorized Release that has

not been corrected within the prior six-month period, PRASA shall also provide the planned correction date for any such SSO, DWO or Unauthorized Release. Commencing by May 31, 2025, PRASA shall report, in its Bi-annual reports, information concerning each CSO in the Puerto Nuevo RWWTP Sewer System, including the location (physical address and coordinates) of the CSO Outfall, the date and approximate time the CSO activation began, the date and approximate time the CSO activation ended, and the estimated volume of the discharge.

14. Paragraph 42 of the Decree requires that PRASA provide EPA and the Puerto Rico Department of Health (PRDOH), if applicable, a Prioritization Report for review and approval if PRASA experiences a significant financial change or new CWA or SDWA compliance obligations that affect its ability to meet the deadlines in Appendix I (Capital Projects Subject to Prioritization) of the Decree. In cases involving a significant financial change, such reports are to include information explaining the significant financial change (including, but not limited to, all financial documents and relevant correspondence explaining the significant financial change). Paragraph 42 of the Decree is modified to provide that any such reports also include an analysis of such financial information in accordance with EPA's Clean Water Act Financial Capability Assessment Guidance dated February 2023, or any amendments of that guidance.

15. Paragraph 59 of the Decree required PRASA to continue to implement a Process Control System ("PCS") at all of its STSs and WWTPs. Paragraph 59 of the Decree is modified to require that PRASA shall fully implement revised and updated PCSs at the STSs and WWTPs in the East, North and South regions by June 30, 2023.

16. Paragraph 65 and Appendix W (Minimum Requirements for PRASA's Sewer System Response and Clean-Up Plan) of the Decree require PRASA to implement a Spill Response and Cleanup Plan ("SRCP"). Appendix W, Section 9, requires PRASA to include in the SRCP criteria and strategies for public notification of SSOs/CSOs. Appendix W is modified to require that PRASA, at the time it submits its Bi-annual Reports to EPA, also post to its website the information concerning SSOs, Unauthorized Releases, and CSOs that is required by Paragraph 30.e of the Decree, as modified by Paragraph 13 above. The information on PRASA's website described above shall be readily accessible, searchable, and clearly labeled.

17. Section XXII (Penalties) of the Decree requires PRASA to pay stipulated penalties for certain violations of the Decree, unless excused under Section XXVII (Force Majeure). This Modification does not address, and shall have no impact on, PRASA's liability for stipulated penalties for any past or future violations of the Decree including, without limitation, the failure to implement projects in a timely manner as well as the failure to meet effluent limits and the other obligations subject to automatic stipulated penalties.

18. Unless specifically modified by this Modification, the terms of the Decree, including the terms of the specific paragraphs referred to above, are unaffected by this Modification and shall remain in full force and effect.

19. This Modification shall be lodged with the Court for a period of not less than 30 days for public notice and comment. The United States reserves the right to withdraw or withhold its consent if the comments regarding the Modification disclose facts or considerations indicating that the Modification is inappropriate, improper, or inadequate. PRASA consents to entry of this Modification without further notice and agrees not to

withdraw from or oppose entry of this Modification by the Court or to challenge any provision of the Modification, unless the United States has notified PRASA in writing that it no longer supports entry of the Modification.

20. If for any reason the Court should decline to approve this Modification in the form presented, this agreement is voidable at the sole discretion of either of the Parties and the terms of the agreement may not be used as evidence in any litigation between the Parties.

So ORDERED this ____ day of _____, 2023.

Honorable Jay A. García Gregory
United States District Judge

THE UNDERSIGNED PARTY enters into this Decree in the matter of *United States v. Puerto Rico Aqueduct and Sewer Authority, et al.*, Civil No. 3:15-cv-02283

FOR THE PLAINTIFF UNITED STATES OF AMERICA:

Todd Kim
Assistant Attorney General
Environment and Natural Resource Division
U.S. Department of Justice

**DONALD
FRANKEL**

 Digitally signed by DONALD
FRANKEL
Date: 2023.06.29 14:05:57 -04'00'

Dated: _____

Donald G. Frankel
Senior Counsel
Environmental Enforcement Section
Environment and Natural Resources Division
U.S. Department of Justice
408 Atlantic Avenue, Suite 236
Boston, MA 02110
617-947-9590
donald.frankel@usdoj.gov

W. STEPHEN MULDROW
United States Attorney
District of Puerto Rico

FIDEL A. SEVILLANO
Assistant United States Attorney
Chief, Civil Division
U.S. Attorney's Office
District of Puerto Rico
Torre Chardón Suite 1201
350 Carlos E. Chardón Avenue
San Juan, Puerto Rico 00918
787-766-5656

THE UNDERSIGNED PARTY enters into this Decree in the matter of *United States v. Puerto Rico Aqueduct and Sewer Authority, et al.*, Civil No. 3:15-cv-02283

Dated: _____

**BENJAMIN
BAHK**

Digitally signed by
BENJAMIN BAHK
Date: 2023.06.05
08:54:33 -04'00'

Benjamin Bahk
Director
Water Enforcement Division
Office of Civil Enforcement
Office of Enforcement and Compliance Assurance
United States Environmental Protection Agency
1200 Pennsylvania Ave., N.W.
Mail Code 2243A
Washington, D.C. 20460

Dated: _____

**MEGAN
KNIGHT**

Digitally signed by
MEGAN KNIGHT
Date: 2023.06.05
08:58:30 -04'00'

Megan Knight
Attorney-Advisor
Municipal Enforcement Branch
Water Enforcement Division
Office of Civil Enforcement
Office of Enforcement and Compliance Assurance
Environmental Protection Agency
1200 Pennsylvania Ave., N.W.
Washington, D.C. 20460

THE UNDERSIGNED PARTY enters into this Decree in the matter of *United States v. Puerto Rico Aqueduct and Sewer Authority, et al.*, Civil No. 3:15-cv-02283

Dated: 4/10/23

A handwritten signature in black ink, appearing to read 'Paul Simon', is written over a horizontal line. The signature is stylized and extends to the right.

Paul Simon
Regional Counsel
EPA Region II
290 Broadway
New York, New York

THE UNDERSIGNED PARTY enters into this Decree in the matter of United States v. Puerto Rico Aqueduct and Sewer Authority, et al., Civil No. 3:15-cv-02283

FOR THE DEFENDANT PUERTO RICO AQUEDUCT AND SEWER AUTHORITY:

Dated: _____



Doriel I. Pagán Crespo
Executive President
Puerto Rico Aqueduct and Sewer Authority
P.O. Box 7066
San Juan, Puerto Rico 00916-7066

Dated: _____



Damaris Santini Martínez
Executive Vice President for Operations
Puerto Rico Aqueduct and Sewer Authority
P.O. Box 7066
San Juan, Puerto Rico 00916-7066

Dated: _____



Mariana Pérez Cordero
Executive Vice President of Administration
Puerto Rico Aqueduct and Sewer Authority
P.O. Box 7066
San Juan, Puerto Rico 00916-7066

Dated: _____



Arnaldo Jiménez Acevedo
Executive Vice-President of Corporate & Strategic
Planning
Puerto Rico Aqueduct and Sewer Authority
P.O. Box 7066
San Juan, Puerto Rico 00916-7066

Dated: 5-11-23



Joel Lugo Rosa
Executive Director for Infrastructure
Puerto Rico Aqueduct and Sewer Authority
P.O. Box 7066
San Juan, Puerto Rico 00916-7066

Dated: 5-11-23



Orlando Rodríguez Hernández
Executive Director of Environmental Compliance
and Quality Control
Puerto Rico Aqueduct and Sewer Authority
P.O. Box 7066
San Juan, Puerto Rico 00916-7066

Dated: 5-11-2023



Raquel Matos Rolón
General Legal Counsel
Puerto Rico Aqueduct and Sewer Authority
P.O. Box 7066
San Juan, Puerto Rico 00916-7066

Dated: 5-11-23



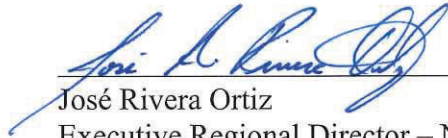
Omar Rivera Rolón
Finance Director
Puerto Rico Aqueduct and Sewer Authority
P.O. Box 7066
San Juan, Puerto Rico 00916-7066

Dated: _____



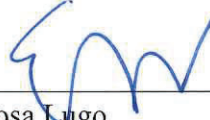
Roberto W. Martínez
Executive Regional Director – Metro Region
Puerto Rico Aqueduct and Sewer Authority
P.O. Box 7066
San Juan, Puerto Rico 00916-7066

Dated: _____




José Rivera Ortiz
Executive Regional Director – North Region
Puerto Rico Aqueduct and Sewer Authority
P.O. Box 7066
San Juan, Puerto Rico 00916-7066

Dated: 5/11/23



Eric Rosa Lugo
Executive Regional Director – West Region
Puerto Rico Aqueduct and Sewer Authority
P.O. Box 7066
San Juan, Puerto Rico 00916-7066

Dated: 5/17/23



Bruce León NG
Executive Regional Director – South Region
Puerto Rico Aqueduct and Sewer Authority
P.O. Box 7066
San Juan, Puerto Rico 00916-7066

Dated: 11/may/2023



Enrique Rosario Agosto
Executive Regional Director – East Region
Puerto Rico Aqueduct and Sewer Authority
P.O. Box 7066
San Juan, Puerto Rico 00916-7066

Dated: 5/12/2023



Waleska López Faría
Human Resources and Labor Relations Director
Puerto Rico Aqueduct and Sewer Authority
P.O. Box 7066
San Juan, Puerto Rico 00916-7066

Dated: 05/18/2023



Ismael Robles Maldonado
Maintenance Program Director
Puerto Rico Aqueduct and Sewer Authority
P.O. Box 7066
San Juan, Puerto Rico 00916-7066

Dated: 5/16/2023




Lyneris Martínez Rivera
Training Director
Puerto Rico Aqueduct and Sewer Authority
P.O. Box 7066
San Juan, Puerto Rico 00916-7066

THE UNDERSIGNED PARTY enters into this Decree in the matter of *United States v. Puerto Rico Aqueduct and Sewer Authority, et al.*, Civil No.

FOR THE DEFENDANT THE COMMONWEALTH OF PUERTO RICO:

Dated:


June 1, 2023



Hon. Domingo Emanuelli-Hernández
Attorney General
Puerto Rico Department of Justice
PO Box 9020192
San Juan, PR 00902-0192
(787) 721-7700

APPENDICES

APPENDIX 1

List of WWTP Pump Stations covered by Consent Decree

NUM	WWTP	WWPS Name	
1	PA ADJUNTAS	LA PLAYITA - ADJUNTAS	
2		SAN JOAQUIN	
3	PA AGUADA - AGUADILLA	4424 RAMEY	
4		813 RAMEY	
5		AGUACATE 1	
6		AGUACATE 2	
7		BARREROS (BARRERO PS)	
8		BORINQUEN 1 (RAMEY NO. 4 MAIN)	
9		BORINQUEN 2 (LOS CHICHES)	
10		CACERES	
11		CORRALES	
12		CRUZ ISLETA	
13		EL PRADO	
14		GUERRERO 1 (RAFAEL HERNANDEZ)	
15		GUERRERO 2	
16		JARDINES DE MARIBEL	
17		LOS ALMENDROS	
18		LOS ROBLES	
19		LUYANDO	
20		MARBELLA (VILLA MARBELLA)	
21		MOCA MAIN (MOCA PUEBLO)	
22		MOCA PARQUE (MOCA EL PARQUE)	
23		MONTAÑA	
24		NUEVO SAN ANTONIO (SAN ANTONIO)	
25		PARCELAS ESTELA (ESTELA)	
26		POBLADO SAN ANTONIO	
27		RINCON 1 (RINCON)	
28		RINCON 2	
29		RUIZ GONZALEZ	
30		SAN CRISTOBAL	
31		SECTOR CASUALIDAD	
32		SUB TRONCAL (TRONCAL ESTE)	
33		VILLA ALEGRIA	
34		VILLA TURISTICA	
35		VISTA AZUL	
36		VOLADORAS	
37		ZONA INDUSTRIAL AVON (MONTANA)	
38		PA AGUAS BUENAS	MONSERRATE
39			PALMASOLA (PALMAS REALES)
40	SAN ANTONIO - AGUAS BUENAS		
41	VISTAS DE JAGUEYES		
42	PA AIBONITO	JATIBONITO (HACIENDA KAMILA, JATIBONITO)	
43		BAJADERO	
44		COCA COLA	
45		COSTA MAR	

List of WWTP Pump Stations covered by Consent Decree

46		DOMINGUITO 1
47		DOMINGUITO 2
48		DOMINGUITO 3
49		FACTOR 2
50		GARROCHALES (VILLAS DE GARROCHALES)
51		HACIENDAS TOLEDO
52	PA ARECIBO	ISLOTE 1
53		ISLOTE 2
54		LOS AIRES (ALTOS DE LA VILLA)
55		LOS PINOS (SANTANA, LOS PINOS)
56		PAJUIL
57		PASEOS REALES (PUERTA DEL ESTE, PASEOS
58		PASTOR 2
59		SABANA HOYOS 1
60		SABANA HOYOS 2
61		SABANA HOYOS 3
62		SAN RAFAEL (JARDINES DE SAN RAFAEL)
63	PA BARCELONETA	BUFALO
64		CAMPO ALEGRE
65		CIMARRONA (CIMARRONA MAGUEYES)
66		COTO NORTE
67		FLORIDA PUEBLO
68		JARDINES DE MONACO
69		LA VUELTA DEL 2
70		LAS VEGAS - FLORIDA (LAS VEGAS)
71		LUCCHETTI
72		MAR CHIQUITA
73		MONTE VERDE 1
74		MONTE VERDE 2
75		PAJONAL 1
76		PAJONAL 2
77		PAJONAL 3
78		PARCELAS MARQUEZ
79		POLVORIN
80		PUNTA PALMAS 1
81		PUNTA PALMAS 2 (PTA. PALMA II)
82		SAN FRANCISCO - BARCELONETA (SAN
83		VILLAS DE MANATI
84	VISTA ATENAS	
85	PA BARRANQUITAS	BARRANQUITAS
86		EL PORTON
87		PALO HINCADO I
88		PALO HINCADO II
89		ALTO MONTE (ALTOMONTE)
90		BAY VIEW
91		CAMINO DEL MAR
92		CAMPO VERDE

List of WWTP Pump Stations covered by Consent Decree

93		CANDELARIA ARENAS
94		CERRO GORDO II (ESTANCIAS DE CERRO
95		CIUDAD JARDIN - TOA ALTA
96		COLIMAR
97		EL COQUI
98		ENRAMADA
99		FUENTEBELLA (FUENTE BELLA)
100		HILLSIDE
101		INGENIO (VACIO INGENIO)
102		JARDINES DE LA FUENTE
103		LA FLORESTA
104		LA PROVIDENCIA - TOA ALTA
105		LA PUNTILLA
106		LAGOS DE PLATA
107		LAS AMERICAS - BAYAMON
108		LAS COLINAS
109		LAS GAVIOTAS - TOA BAJA
110		LAS VEGAS - CATAÑO
111		LAS VEREDAS
112		LEVITTOWN 1
113		LEVITTOWN 2
114		LUCHETTY (LUCHETTI)
115		MABO
116		MANSIONES DE GUAYNABO
117		MANSIONES DE MONTECASINO (MANSIONES
118		MARTINEZ NADAL
119	PA BAYAMON	MIRAFLORES
120		MONTE SOL - TOA ALTA
121		MONTE SOL - TOA ALTA (NUEVA)
122		MONTE VERDE
123		PALACIOS REALES
124		PALO SECO
125		PIÑAS (PINAS, EL CEMENTERIO)
126		PORTICOS DE GUAYNABO
127		PUENTE BLANCO
128		QUINTAS DEL RIO
129		RIO PLANTATION
130		RIVERVIEW
131		SAN PEDRO
132		SAN RAFAEL ESTATES (SAN RAFAEL)
133		SAN SOUCI (SAN'S SOUCI)
134		SANTA CATALINA
135		SANTA CLARA - SAN JUAN
136		SANTA ELENA 1 (HACIENDA ELENA I)
137		SANTA ELENA 2 (HACIENDA ELENA II)
138		SANTA ELENA 3 (HACIENDA ELENA III)
139		SIDERURGICA

List of WWTP Pump Stations covered by Consent Decree

140		SIERRA BERDECIA
141		SIERRA TAINA
142		TOA ALTA HEIGHTS
143		TOA LINDA
144		VALENCIA
145		VALLE BELLO
146		VALLES DE SANTA OLAYA (VALLE SANTA
147		VILLAS DE BUENA VISTA
148		VISTAS DEL BOSQUE
149		ZORZAL/BETHEL (EL ZORZAL-BETEL)
150		ALTOS DE LA FUENTE
151		ALTURAS DE HATO NUEVO
152		ALTURAS DE VILLA DEL REY
153		CAGUAS MILENIO 2
154		ESTANCIAS DEL LAGO
155		EXT. ALTURAS DE HATO NUEVO
156		GENERAL ELECTRIC - CAGUAS
157		GRAN VISTA II
158		HACIENDA FLORIDA
159		HACIENDA SAN JOSE
160		HATO INDUSTRIAL (HATO)
161		INDUSTRIAL - SAN LORENZO
162		JARDINES DE CERRO GORDO
163		JARDINES DE SAN LORENZO
164		JOSE MERCADO I
165		JOSE MERCADO II
166		LA SERRANIA
167		LAS CAROLINAS
168		LOMAS DEL SOL
169		LOS CAMINOS
170		LOS PRADO
171	PA CAGUAS	PORTAL DEL SOL
172		QUINTAS DE SAN LUIS
173		REINA DE LOS ANGELES
174		ROOSEVELT - SAN LORENZO
175		SALVATIERRA 1
176		SALVATIERRA 2
177		SAN PEDRO ESTATES
178		SANTA BARBARA
179		SANTA ROSA
180		SAVANNAH REAL
181		TOLINCHE (LOS TOLINCHE)
182		TRONCAL CAGUAX
183		TRONCAL SAN LORENZO
184		VALLE DE SAN LUIS
185		VALLE DEL LAGO
186		VILLA CALIZ I

List of WWTP Pump Stations covered by Consent Decree

187		VILLA CALIZ II
188		VILLA DEL REY I
189		VILLA DEL REY IV
190		VILLA ESPERANZA
191		VILLAS DE CASTRO
192	PA CAMUY HATILLO	CARRIZALES
193		COSTA NORTE
194		EL PUENTE
195		HATILLO PLAYA
196		LOS CORALES
197		LOS RODRIGUEZ (LUIS RODRIGUEZ)
198		MAR AZUL
199		TERRANOVA
200		VISTAS DE CAMUY (VISTA BRISAS DE CAMUY)
201		PA CAROLINA
202	BRISAS DE LOIZA	
203	BUENA VENTURA - CAROLINA	
204	CAROLINA INDUSTRIAL (CAROLINA INDUSTRIAL	
205	CASA VERDE	
206	CIUDAD CENTRAL	
207	CIUDAD JARDIN (RIVER VALLEY)	
208	CIUDAD SEÑORIAL	
209	COLINAS DE MONTECARLO	
210	CONQUISTADOR I (CONQUISTADOR 1)	
211	CONQUISTADOR II	
212	COUNTRY CLUB	
213	EL CABO	
214	EL MOROCO (VISTAMAR, EL MOROCO)	
215	ENCANTADA	
216	ESTANCIAS DEL CAMINO	
217	EYEC. CAROLINA PUEBLO (CAROLINA PUEBLO)	
218	EYEC. ISLA VERDE (EYECTORES ISLA VERDE)	
219	EYEC. LA VICTORIA (VICTORIA INDUSTRIAL)	
220	EYEC. MARTIN GONZALEZ (MARTIN GONZALEZ)	
221	HACIENDA REAL	
222	HACIENDAS DE CARRAIZO	
223	HOLIDAY INN (HOTEL ISLA VERDE)	
224	HONG KONG	
225	HOYO MULAS (HOYO MULAS SLUDGE)	
226	INDUSTRIAL LAS CUEVAS	
227	JARDINES DE CAROLINA	
228	LA GALLERA (LA GALLERA)	
229	LA LOMITA (LA LOMITA)	
230	LA PONDEROSA	
231	LAS HACIENDAS	
232	LOIZA C	
233	LOIZA D	

List of WWTP Pump Stations covered by Consent Decree

234		LOIZA E (PARCELAS VIEQUES)
235		LOIZA PUEBLO
236		LOMAS DE CAROLINA
237		LOS ANGELES
238		LOS COLOBOS
239		LOS MIRTOS
240		LOURDES
241		METROPOLIS
242		MIÑI MIÑI (MINI MINI)
243		MONTE CARLO (MONTECARLO)
244		PARQUE ECUESTRE
245		PARQUE ESCORIAL
246		RIO GRANDE MAIN (RIO GRANDE LOIZA, R.G.
247		RIO GRANDE PLAZA
248		RIVER GARDEN
249		SABANA LLANA
250		SAN ISIDRO
251		SAN MARTIN
252		TORRECILLAS
253		TRUJILLO ALTO PUEBLO
254		TRUJILLO PUENTE (TRUJILLO ALTO PUENTE)
255		USUBAL
256		VILLA CAROLINA GRANDE (VILLA CAROLINA,
257		VILLA CAROLINA PEQUEÑA (VILLA CAROLINA)
258		VILLAS DE RIO GRANDE
259		VILLAS DEL MAR
260		VISTAMAR MARINA
261		VISTAS DEL OCEANO
262		ALTURAS DE BEATRIZ (BEATRIZ PS)
263		CAYEY MAIN (RINCON MASTER)
264		CIDRA I
265		CIDRA II
266		CIUDAD PRIMAVERA
267		CONSOLIDATED (CIGAR)
268		ESTANCIAS DE CIDRA (ZAPERA)
269	PA CAYEY	ESTANCIAS DE MONTE RIO
270		FUENTE DE AGUA VIVA
271		MANSIONES DE MONTE VERDE
272		MATON 1
273		MATON 2
274		REPARTO MONTELLANO
275		SAN TOMAS
276		SANTA TERESITA (MIGUEL RIVERA MARTINEZ,
277	TREASURE VALLEY	
278		BARAHONA 1
279		BARAHONA 2
280		BO. PESAS

List of WWTP Pump Stations covered by Consent Decree

281		BRISAS DE JAGUAS
282	PA CIALES	CALICHE
283		DOS RIOS
284		EL PUEBLITO
285		LAS CASITAS
286		LAS GUABAS
287		VALLES DE BARAHONA
288		PA COMERIO
289	COMERIO MAIN	
290	LA PRIETA	
291	SABANA DEL PALMAR	
292	PA COROZAL	CERROMONTE
293		EL IDILIO
294		ESTANCIAS DE PALMAREJO
295		MARIA DEL CARMEN
296		MONTE REY
297	PA CULEBRA	CLARK (AEROPUERTO)
298		SAN ISIDRO - CULEBRA (ESTACION AUXILIAR DE
299	PA DORADO	ARENALES - DORADO
300		CAMPANILLAS (CAMPANILLAS)
301		COSTA DE ORO
302		DORADO BEACH EAST
303		DORADO BEACH SOUTHERN (DORADO BEACH)
304		DORADO BEACH WESTERN
305		DORADO CLUB (VEGA ALTA DORADO CLUB LS)
306		DORADO COUNTRY STATES
307		DORADO DEL MAR
308		DORADO REGENCY
309		ESTANCIAS DE CERRO GORDO
310		GRAN PALM
311		LA PACHANGA
312		MAMEYAL
313		MOLINOS DEL RIO
314		MONTE ELENA
315		PALMA DORADO VILLAGE (PALMA DORADA)
316		SABANERA
317		SAN ANTONIO - DORADO
318		TOA BAJA
319	TREASURE POINT	
320	VALLE DORADO	
321	VEGA DORADA	
322	VILLA ALEGRIA - VEGA ALTA	
323		ALLEN GROUP
324		ALTURAS DE SAN PEDRO
325		BARRIADA OBRERA
326		BRISAS DE CEIBA
327		BRISAS DEL MAR

List of WWTP Pump Stations covered by Consent Decree

328		CEIBA
329		COSTA AZUL
330		COSTA ESMERALDA
331		EL RIO (SANITARY PUMP STATION)
332		FAJARDO GARDENS
333		FAJARDO PLAZA (CINEMAS)
334		JERUSALEM (FAJARDO)
335		JUAN MARTIN
336		LA VEGA - CEIBA (LAS VEGAS)
337		LAS CROABAS
338	PA FAJARDO NUEVA	LAS GAVIOTAS - CEIBA
339		LOS KIOSKOS
340		LUIS M. CINTRON
341		MONTE SOL - FAJARDO
342		PAISAJE DEL LAGO
343		PALMER
344		PUERTO REAL
345		QUEBRADA SECA
346		SANTA ISIDRA
347		SANTA MARIA - CEIBA
348		SOLIMAR
349		VILLA MARINA
350		VILLAS DEL PILAR
351		VISTAS DE LUQUILLO
352		VISTAS DEL CONVENTO
353		BACO
354	PA GUANICA	ENSENADA
355		PLAYA MALECON
356		SALINAS PROVIDENCIA
357		AGUIRRE (MONTESORIA I)
358		BRANDERI
359		HACIENDA LOS RECREO
360		HOSTOS
361		JARDINES DE GUAMANI
362		LA PLAYA
363		LAS MARGARITAS - SALINAS
364	PA GUAYAMA	LAS OCHENTAS
365		MIRAMAR II Y III
366		OLIMPO
367		PALMAS DE ARROYO
368		PORTAL DE ANCONES
369		PUENTE DE JOBOS
370		SAN FELIPE
371		TRONCAL ARROYO
372		TRONCAL SALINAS
373	PA GUAYANILLA	BAHIA
374		LA CONCEPCION

List of WWTP Pump Stations covered by Consent Decree

375		APRIL GARDENS
376		ARENALES
377		BOQUERON MELILLAS (MELILLA)
378		BUENA VISTA - HUMACAO
379		BUZO
380		CALA DE HUCARES (HUCARES CALA)
381		CANDELERO
382		CASA BELLA
383		CASA BELLA
384		CIUDAD CRISTIANA
385		CLUB CIVICO
386		COLINAS DE JUNCOS (COLINAS)
387		COMUNIDAD SANTANA
388		EL CEMENTERIO
389		EL ENCANTO
390		EL ENSANCHE
391		ESTANCIAS DE JUNCOS
392		ESTANCIAS DE LA CEIBA
393		FOMENTO (FOMENTO INDUSTRIAL
394		FOMENTO (FOMENTO INDUSTRIAL DE
395		HUCARES II (MALECON)
396		HUCARES 1 (HUCARES PROYECTO)
397		JARDIN CENTRAL
398		JARDINES DE LA VIA (ESTANCIAS DE LA VIA)
399		JARDINES DEL ESTE
400	PA HUMACAO	JUNQUITO
401		LA INMACULADA - LAS PIEDRAS
402		LA SABANA
403		LAS CAMPIÑAS II (LA CAMPIÑA)
404		LIRIOS CALA
405		LOS ALMENDROS - JUNCOS
406		MANSIONES DE LOS ARTESANOS
407		OLIMPIC VILLAGE
408		PALMA ROYALE
409		PARK HURST
410		PASEO LOS ARTESANOS
411		PATAGONIA
412		REPARTO PLACITA
413		PORTALES (PORTAL DE LAS PIEDRAS)
414		PUEBLITO DEL RIO
415		RAMON RIVERA DIPLO
416		RIO BLANCO HEIGHTS
417		SANTIAGO Y LIMA
418		VALLE PIEDRAS
419		VILLA HUMACAO
420		VILLA PALMIRA
421	VILLAS DE CANDELERO	

List of WWTP Pump Stations covered by Consent Decree

422		VILLAS DE SAN CRISTOBAL
423		VILLAS DEL RIO
424		ZONA INDUSTRIAL - LAS PIEDRAS (FOMENTO INDUSTRIAL LAS PIEDRAS)
425	PA ISABELA	AVENIDA AGUADILLA (AGUADILLA AVENUE)
426		COMUNIDAD CORCHADO (CORCHADO)
427		ISLA AZUL
428		VILLA PESQUERA
429		VISTAS DE ISABELA (VISTA ISABELA PS)
430		ZONA INDUSTRIAL (COCA COLA, INDUSTRIAL)
431	PA JAYUYA NUEVA	LA MONSERRATE
432	PA LAJAS	BOQUERON
433		EL SUBMARINO
434		EL VALLE
435		ESTANCIAS DEL PARRA
436		LA PARGUERA
437		MAGUAYO
438		PALMAREJO I
439		PALMAREJO II
440		PLAYITA ROSADA
441		TOKIO I
442		TOKIO II
443		VILLA TAINA
444	PA LARES	ALTAMIRA
445		BRISAS DE LARES (JARDINES DE LARES)
446		LARES MILLS
447		LOS VIERA (VIERA)
448		MONTEBELLO - LARES
449		PALMA DEL SOL
450		VILLA BORINQUEN
451	PA LAS MARIAS	EL HOSPITAL
452		JARDINES LAS MARIAS
453		LAS BAMBUAS
454	PA MAUNABO	EL FARO (VILLAS DEL FARO)
455		EMAJAGUAS
456		TALANTE
457		1 BO. LAVADERO
458		2 BO. LAVADERO
459		AÑASCO MAIN
460		BAJURAS (EL COQUI)
461		BALLAJA
462		CABO ROJO MAIN
463		COFRESI
464		COLOMBIA
465		CONCORDIA
466		EL DEPORTIVO
467		EL HOYO

List of WWTP Pump Stations covered by Consent Decree

468		EL REMANSO
469		EL ROSARIO (SAN GERMAN)
470		GIRASOL
471		GUANAJIBO HOMES
472		HACIENDAS CONSTANCIA
473		HERNANDEZ ROSA
474		LA CONCEPCION
475		LA GARITA
476		LAS BOVEDAS
477	PA MAYAGUEZ	LLAVAT
478		MANSIONES DE CABO ROJO
479		MANSIONES DE LA 100
480		MARAVILLA SUR 1
481		MARAVILLA SUR 2
482		MONTE GRANDE
483		MONTE RIO
484		MONTERREY
485		PERICHI
486		POZO HONDO
487		PUERTO REAL I
488		PUERTO REAL II
489		RAMIREZ DE ARRELLANO
490		ROOSEVELT
491		SABALOS
492		SANTURCE
493		SIERRA MAESTRA
494		URB. ESTANCIAS DEL RIO
495		VALLE DE AÑASCO
496		VILLA PARAISO
497		VISTA DEL RIO
498		BUENA VISTA - MOROVIS
499		CRUZ ROSARIO (CRUZ ROSARIO LS)
500		LAS CUMBRES - MOROVIS (BUENA VISTA)
501		LAS PRADERAS (PRADERAS DE MOROVIS SUR)
502		MONTELLANO
503		MOROVIS PUEBLO
504	PA MOROVIS	PALMAS DEL SUR
505		TORRECILLAS I
506		TORRECILLAS II
507		TORRECILLAS III
508		TORRECILLAS IV
509		TORRECILLAS V
510		TORRECILLAS VI
511		URB. VALLE SAN LUIS
512		ACHIOTE
513		JARDINES DE NARANJITO
514	PA NARANJITO	LAGOS DEL PLATA 1

List of WWTP Pump Stations covered by Consent Decree

515		LAGOS DEL PLATA 2
516		LAGOS DEL PLATA 3
517	PA OROCOVIS	BAJURAS DE OROCOVIS
518		BARROS I
519		BARROS II
520		OROCOVIS MAIN
521		VILLA COOPERATIVA
522	PA PATILLAS	EL BAJO
523		JACABOA
524		LA PROVIDENCIA - PATILLAS
525		SOLYMAR
526	PA PEÑUELAS	RIO SOL
527	PA PONCE	ALTA VISTA
528		CAMINO DEL SUR
529		CARACOLES
530		COLINAS DE VERDE AZUL
531		COSTA CARIBE
532		COTO LAUREL
533		ESTANCIAS DEL SUR
534		GUAYABAL I
535		GUAYABAL II
536		INDUSTRIAL SABANETAS
537		JACAGUAS
538		JAGUEYES
539		LA CEIBA
540		LAS AMERICAS - PONCE
541		LAS DELICIAS
542		LEONARDO SANTIAGO
543		LOMAS
544		LOS CAOBOS
545		MACHUELO
546		MERCEDITA
547		MONTE SOL - JUANA DIAZ
548		PASEO LOS REYES
549		PASTILLO
550		PERLA DEL SUR
551		POTALA SERRANO
552		PUNTA CARENEROS
553		SALAZAR
554		SANTA MARTHA
555		VALLE HUCARES
556		VALLE REAL
557		VILLA FLORES
558		VILLA GRILLASCA
559		
560		AMELIA
561		BUEN CONSEJO

List of WWTP Pump Stations covered by Consent Decree

562		CANEY
563		CIUDAD UNIVERSITARIA
564		COLINAS DE CUPEY
565		COLINAS METROPOLITANAS
566		COM GUAYNABO
567		CONSTITUCION
568		COVADONGA
569		CUPEY GARDENS
570		EL ALAMO
571		EL CAPA
572		EL VIGIA
573		EXT. VILLA ANDALUCIA
574		FAIRVIEW 1
575		FAIRVIEW 2
576		FAIRVIEW 3
577		GARDENVILLE
578		HILL BROTHERS
579		HUYKE
580		JARDINES DE TRUJILLO ALTO
581		JOFFRE
582		LA CAMPIÑA (LA CAMPINA)
583		LA MARINA
584		LA PERLA II (PERLA)
585		LA RABUA
586		LABRA
587		LADERAS DE SAN JUAN
588		LAS CASAS GARDENS (MIRADOR LAS CASAS)
589		LAS CUMBRES - SAN JUAN
590	PA PUERTO NUEVO	LAS MARGARITAS - SAN JUAN (LAS
591		LOMAS DE TRUJILLO
592		LOS COROZOS
593		LOS LIRIOS
594		MARTIN PEÑA (MARTIN PENA,TOKIO)
595		MONTE BRISAS
596		MONTE REAL
597		MONTEBELLO - TRUJILLO ALTO (PARQUE DE
598		MONTEHIEDRA I
599		MONTEHIEDRA II
600		NEMESIO CANALES
601		PALACIO ROSADO (EL MORRO)
602		PALMAR DEL RIO
603		PANORAMA GOLDEN
604		PASEOS DE SAN JUAN
605		PIEDRAS BLANCAS
606		PISCINA OLIMPICA (ESCAMBRON)
607		PRADO ALTO
608		PUEBLO SECO

List of WWTP Pump Stations covered by Consent Decree

609		PUERTO NUEVO
610		RIDGE TOP (RIDGE TOP LUXURY APTS.)
611		RINCON ESPAÑOL
612		SAN FERNANDO
613		SAN GERARDO
614		SANTA MARIA - SAN JUAN
615		UM-49
616		VILLA ANDALUCIA
617		VILLA CAPRI
618		VILLAMAR (ISLA VERDE VILLAMAR)
619		VILLAS DEL PARAISO
620		VILLAS DEL SOL
621		VISTA ALEGRE
622	PA RIO GRANDE STATES	LOS ARBOLES
623		RIO GRANDE ESTATES
624	PA SAN GERMAN	EL PEDREGAL
625		EL POLY
626		EL REAL
627		FOMENTO - SABANA GRANDE
628		LA MAQUINA I
629		LA MAQUINA II
630		LAS GUARAS
631		LLUBERAS (SUSUA)
632		MINILLAS I
633		MINILLAS II
634		QUINTAS DEL REY
635		SABANA ENEAS
636		SABANA GRANDE (SABANA GRANDE MAIN)
637		SABANA I
638		SABANA II
639		SALAMANCA
640		SAN ANTONIO
641		SANTA ANA
642		SANTA MARTA
643		PA SAN SEBASTIAN NEW
644	LOS ALAMOS	
645	PA SAN SEBASTIAN OLD	COMUNIDAD GONZALEZ 1
646		COMUNIDAD GONZALEZ 2
647		VILLA SOFIA NUEVA
648		VILLA SOFIA VIEJA
649		COAMO MAIN
650		JAUCAS
651		PARQUE LAS FLORES
652		PASEO DE JACARANDA
653		PLAYITA CORTADA
654		PORTAL DE LA REINA
655		PRADERAS DEL SUR

List of WWTP Pump Stations covered by Consent Decree

656	PA SANTA ISABEL	PROVINCIAS DEL RIO
657		PUERTO ARTURO
658		SAN IDELFONSO
659		SANTA ANA - COAMO
660		VALLE ABAJO (VALLE ARRIBA)
661		VALLE ESCONDIDO
662		VILLA MADRID (NIAGRAS)
663	VILLA PULGA	
664	PA TOA ALTA	GREEN VALLEY
665		JARDINES DE TOA ALTA
666		PALACIOS DE MARBELLA
667		PALACIOS DEL RIO
668		PASEOS DE ALTA VISTA
669		PRADERAS DEL RIO
670		VILLA MATILDE
671	PA UNIBON	UNIBON 1
672		UNIBON 2
673		UNIBON 3
674		UNIBON 4
675	PA UTUADO NUEVA	ALTURAS DE UTUADO
676		CALLE PROGRESO
677		PEREZ MATOS
678		SALTO ABAJO (UTUADO NUEVA SALTO ABAJO)
679		SAN JOSE
680	PA VEGA ALTA	COREA
681		GENERAL ELECTRIC - VEGA ALTA (INDUSTRIAL)
682		LOS MONTES
683		PONDEROSA Y ESPINOSA
684		SANTA ANA - VEGA ALTA
685		VELOMAS
686	PA VEGA BAJA	ALTURAS DE VEGA BAJA
687		BRASILIA
688		CAMINO DEL SOL 2
689		CIUDAD REAL
690		EL GUARICO (GUARCIO VIEJO)
691		EL ROSARIO - VEGA BAJA
692		ESTANCIAS DE TORTUGUERO
693		JARDINES DE VEGA BAJA
694		OJO DE AGUA
695		SAN DEMETRIO
696		VILLA LOS PESCADORES
697		VILLA PINARES
698		VILLAS DE LA PLAYA (VILLAS DE LA PLAYA LS)
699		ESPERANZA (COMUNIDAD ESPERANZA)
700	FLORIDA	
701	FOMENTO - VIEQUES	
702	JARDINES DE VIEQUES (JARDINES DE ISABEL II)	

List of WWTP Pump Stations covered by Consent Decree

703	PA VIEQUES	LA MINA (COMUNIDAD ESPERANZA 2)
704		LAS MARIAS
705		LUCILA FRANCO (REPARTO LUCILA FRANCO)
706		MARTINO
707		RIECKEHOFF
708	PA YABUCOA	BUENA VENTURA - YABUCOA (BUENA)
709		DR. BERRIOS
710		JAIME C. RODRIGUEZ
711		LA COMUNA (COMUNAS)
712		LA WINSTON (WINSTON)
713	TEJAS TRINIDAD (TRINIDAD)	
714	PA YAUCO	BARINAS NUEVA
715		EL CAFETAL
716		LUCHETTI
717		MONT BLANC
718		OASIS
719	SAN FRANCISCO - YAUCO	
720	PA COCO BEACH	COCO BEACH

APPENDIX 2

Operational Remedial Measures - Term 1*

*The operational remedial measures for Term 1 will be completed by December 31, 2023.

Region	Plant	Classification	Project Description	Estimated Cost
East	Caguas	Wastewater	Install new ORP Anoxic BNR #3 Analyzer	\$3,000.00
			Install new ORP Anoxic BNR #2 Analyzer	\$3,000.00
			Install new ORP Anaerobic BNR #2 Analyzer	\$3,000.00
			Install new ORP Anaerobic BNR #1 Analyzer	\$3,000.00
East	Las Bocas	STS	Replace tiles at all three (3) sludge drying beds	\$50,000.00
West	San Germán	Wastewater	Repair Aerator Rotor #1, #2 and #3	\$33,000.00

Operational Remedial Measures - Term 2*

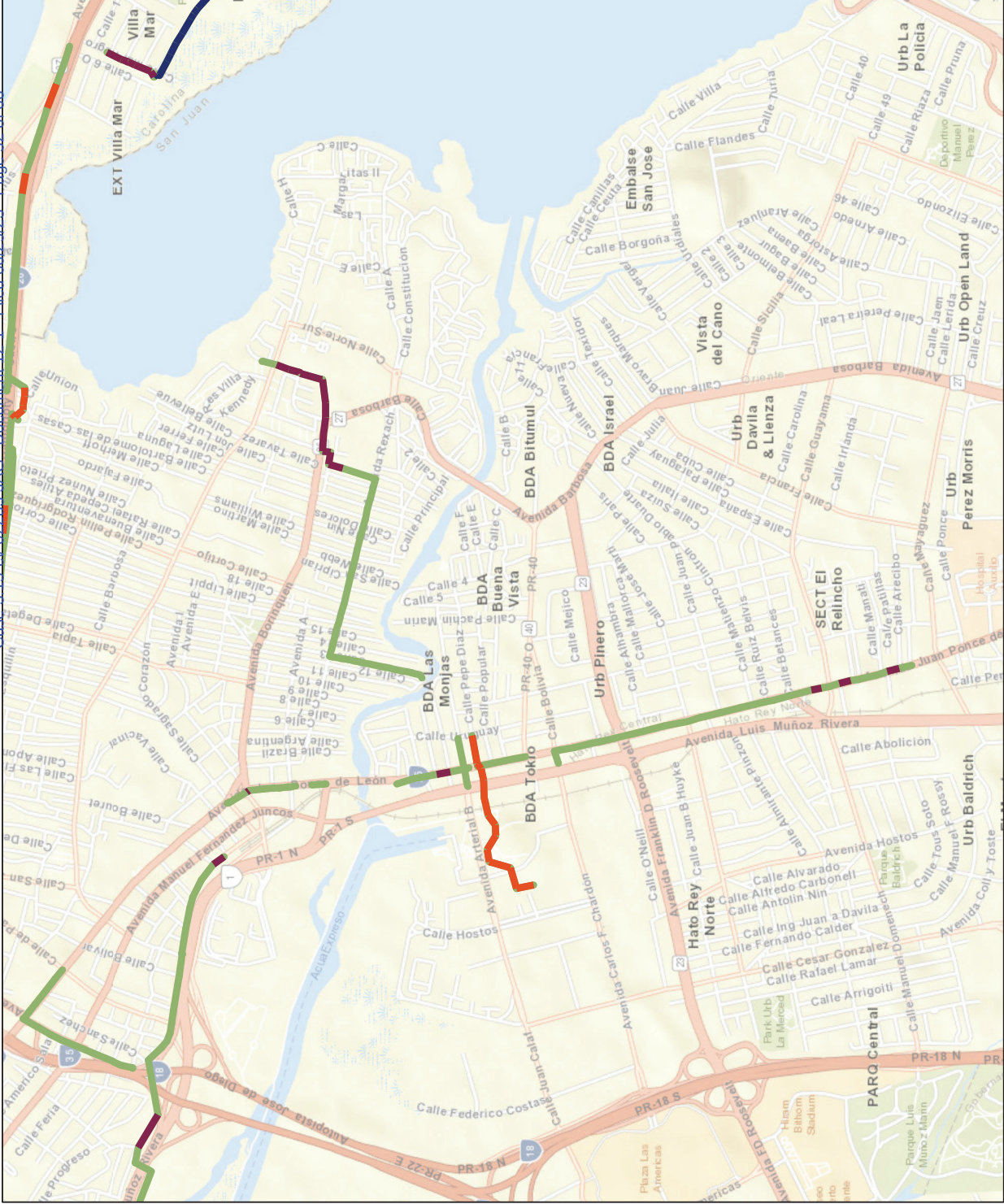
***The operational remedial measures for Term 2 will be completed by December 31, 2024.**

Region	Plant	Classification	Project Description	Estimated Cost
East	Jagual	STS	Install permanent Alternate Power Unit	\$60,000.00
East	Parcelas Borinquen	Wastewater	Evaluate major overhaul or replacement of Rotating Biological Contactor (RBC) #1 and #2 by updated RBC model	\$20,000.00
East	Rio Blanco	STS	Install automatic transfer switch for WTP and Alternate Power Unit	\$100,000.00
Metro	Puerto Nuevo	Wastewater	Replace influent Pump #4 and suction elbow	\$400,000.00
North	Barceloneta	Wastewater	Repair RAS # 3 valves	\$21,500.00
North	Ciales	Wastewater	Repair EGU of Dos RIOS pump station	\$127,000.00
North	Dorado	Wastewater	Repair Stirrer Transmission RBC # 3	\$17,000
			Replace transmission RBC #1, Reactor #1	\$1,843.00
			Replace Transmission RBC #2, Reactor #1	\$17,111.00
			Replace Transmission RBC #3, Reactor #2	\$17,111.00
			Replace Transmission RBC #4, Reactor #2	\$1,843.00
			Replace Transmission RBC #5, Reactor #3	\$1,843.00
North	Dorado	Wastewater	Replace Transmission RBC #6, Reactor #3	\$17,111.00

Region	Plant	Classification	Project Description	Estimated Cost
			Replace Transmission RBC #7, Reactor #4	\$17,111.00
			Replace Transmission RBC #8, Reactor #4	\$17,111.00
			Replace Transmission RBC #9, Reactor #5	\$17,111.00
			Replace Transmission RBC #10, Reactor #5	\$1,843.00
			Replace Stirrer Transmission # 1	\$25,000.00
			Replace Stirrer Transmission RBC # 2	\$17,000.00
			Replace Stirrer Transmission RBC # 4	\$17,000.00
			Repair Filter # 1	\$5,000.00
			Repair Aerator #4 Anoxic Aerobic # 1	\$30,000.00
			Replace Entrance rake screen conveyor	\$50,000.00
			Repair tank (seal) and replace valve of Nutrient Removal Tank	\$65,000.00
North	Toa Alta	Wastewater	Repair Grit Classifier # 1	\$7,500.00
			Repair Grit Classifier # 2	\$7,500.00
North	Toa Alta	Wastewater	Repair Grit transmission # 1	\$5,000.00

Region	Plant	Classification	Project Description	Estimated Cost
			Repair Grit transmission # 2	\$5,000.00
North	Vega Alta	Wastewater	Repair Sludge drying beds vacuum pump system	\$7,500
North	Vega Baja	Wastewater	Replace Anaerobic tank BAT #4 transmission	\$3,000.00
			Replace Anaerobic tank BAT #4 motor	\$5,000.00
			Repair STM Aerator #3 and #4	\$14,000.00
			Repair transmission of STM Aerator #9	\$4,500.00
			Repair Treatment Tank #9 transmission and motor	\$8,500.00
			Repair Treatment Tank #4 transmission and motor	\$8,500.00
			Replace Digester Stirrer # 1	\$3,500.00
			Replace Anaerobic Tank Biologically Accelerated Treatment (BAT) # 2 transmission and motor	\$8,000.00
West	San Germán	Wastewater	Replace Submersible Mixer M-1-01	\$36,245.00

APPENDIX 3



Legend

Phase #1 - East Area

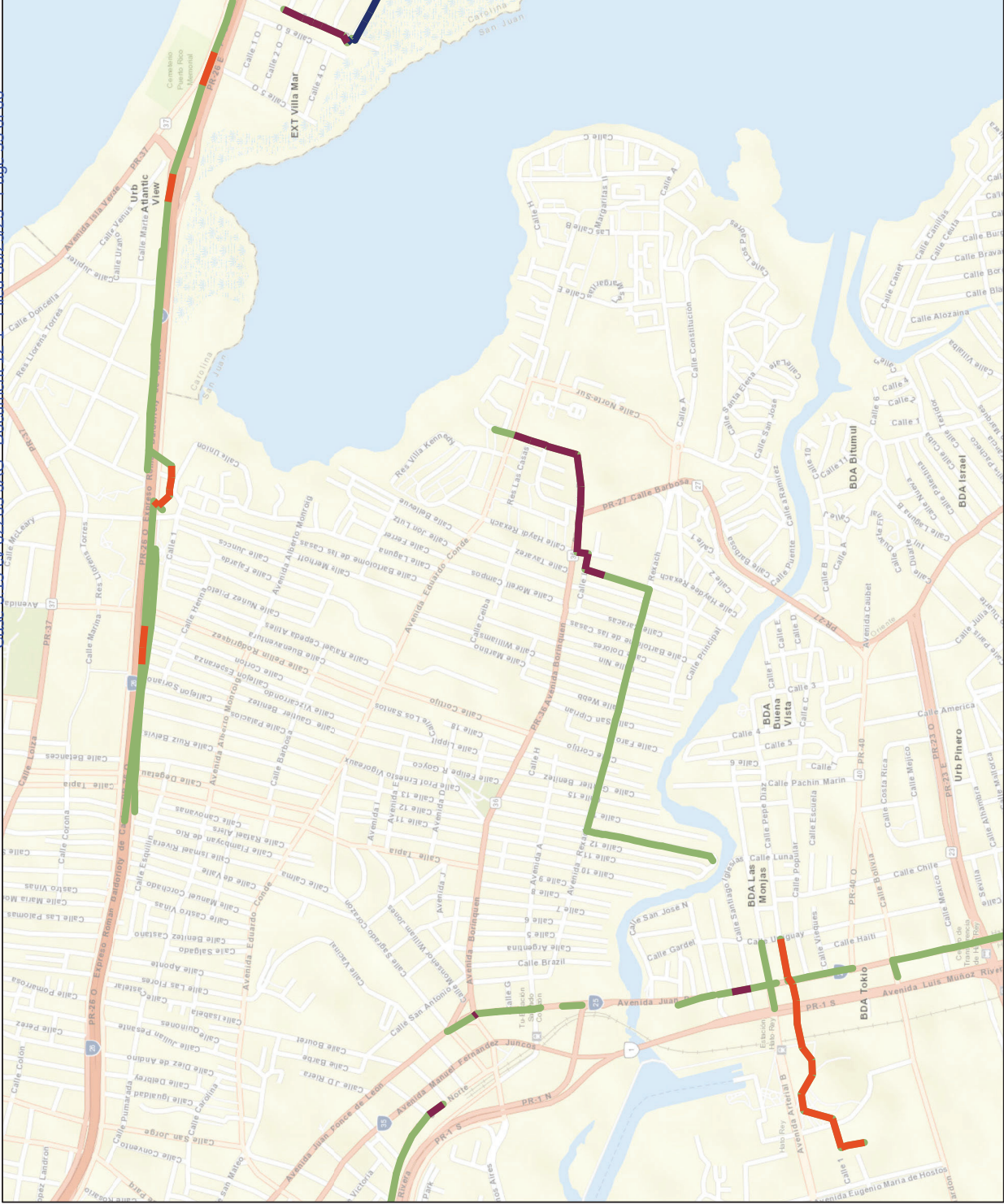
Phase #2 - Baldorioty Area

Phase #3 - San Jose Area

Reconnaissance Already Performed



Reconnaissance of Phase #1 - East Area



Legend

Phase #1 - East Area

Phase #2 - Baldorioty Area

Phase #3 - San Jose Area

Reconnaissance Already Performed



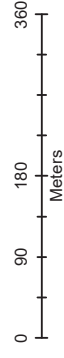
Reconnaissance of Phase #2 - Baldorioty Area





Legend

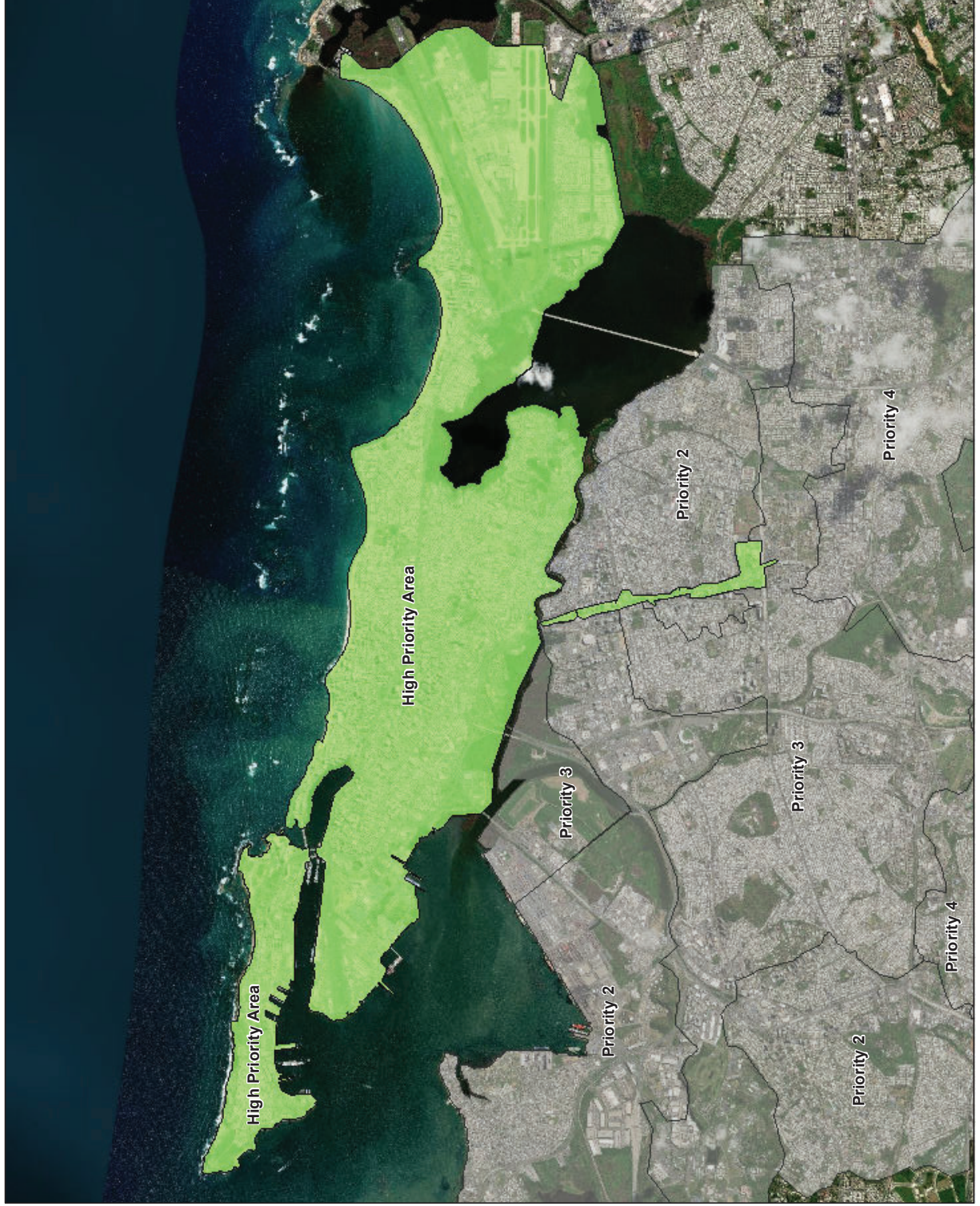
- Phase #1 - East Area
- Phase #2 - Baldorioty Area
- Phase #3 - San Jose Area
- Reconnaissance Already Performed



Reconnaissance of Phase #3 - San Jose Area



APPENDIX 4

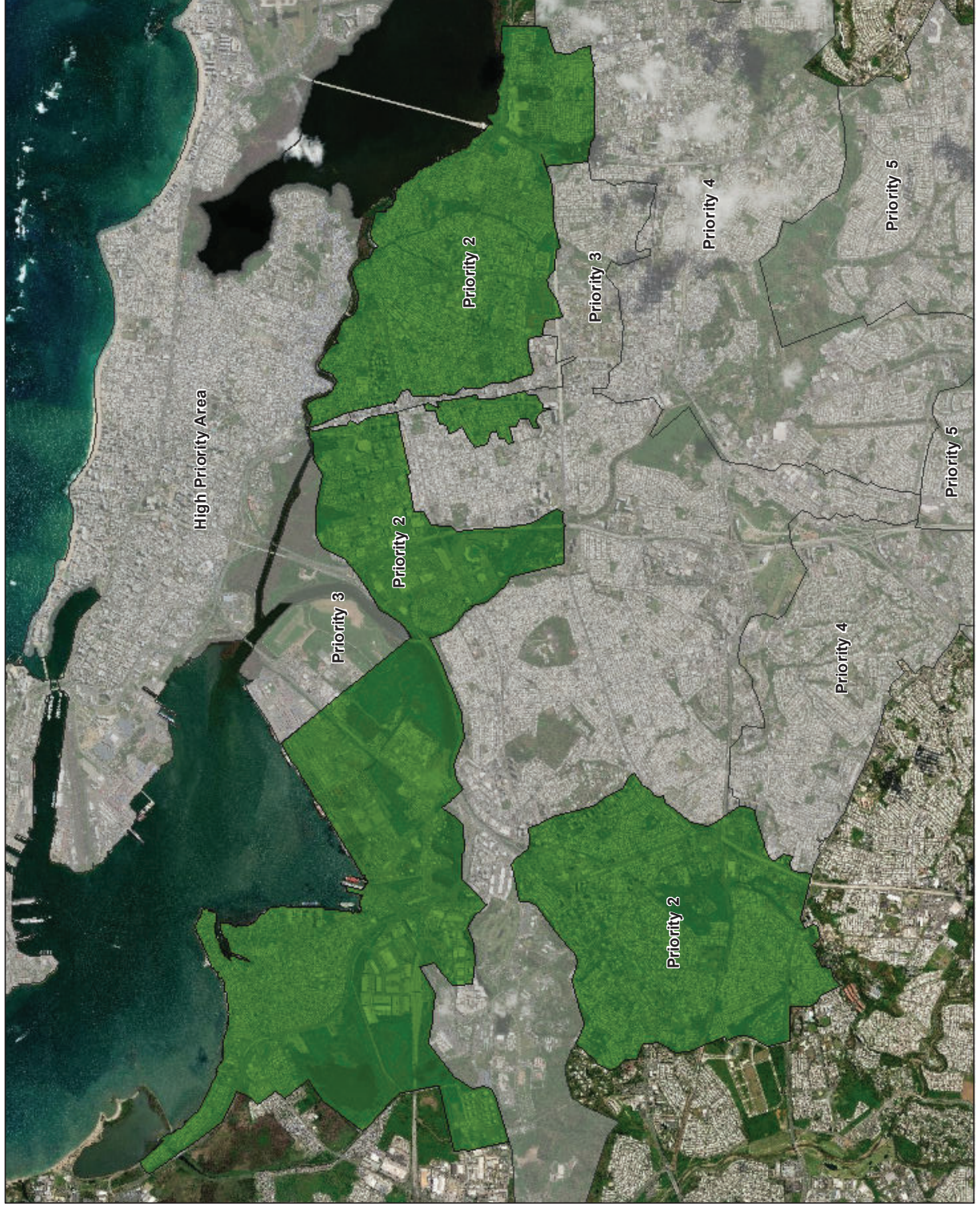


Legend
Project Area
High Priority Area
Other Project Areas

Service Layer Credits: Source: Esri, Maxar, GeoEye, Earthstar Geographics, CNES/Airbus DS, USDA, USGS, AeroGRID, IGN, and the GIS User Community
Sources: Esri, HERE, Garmin, USGS, Intermap, INCREMENT P, NRCan, Esri



High Priority Area
Priority Areas
Puerto Nuevo RWWTP
Collection System



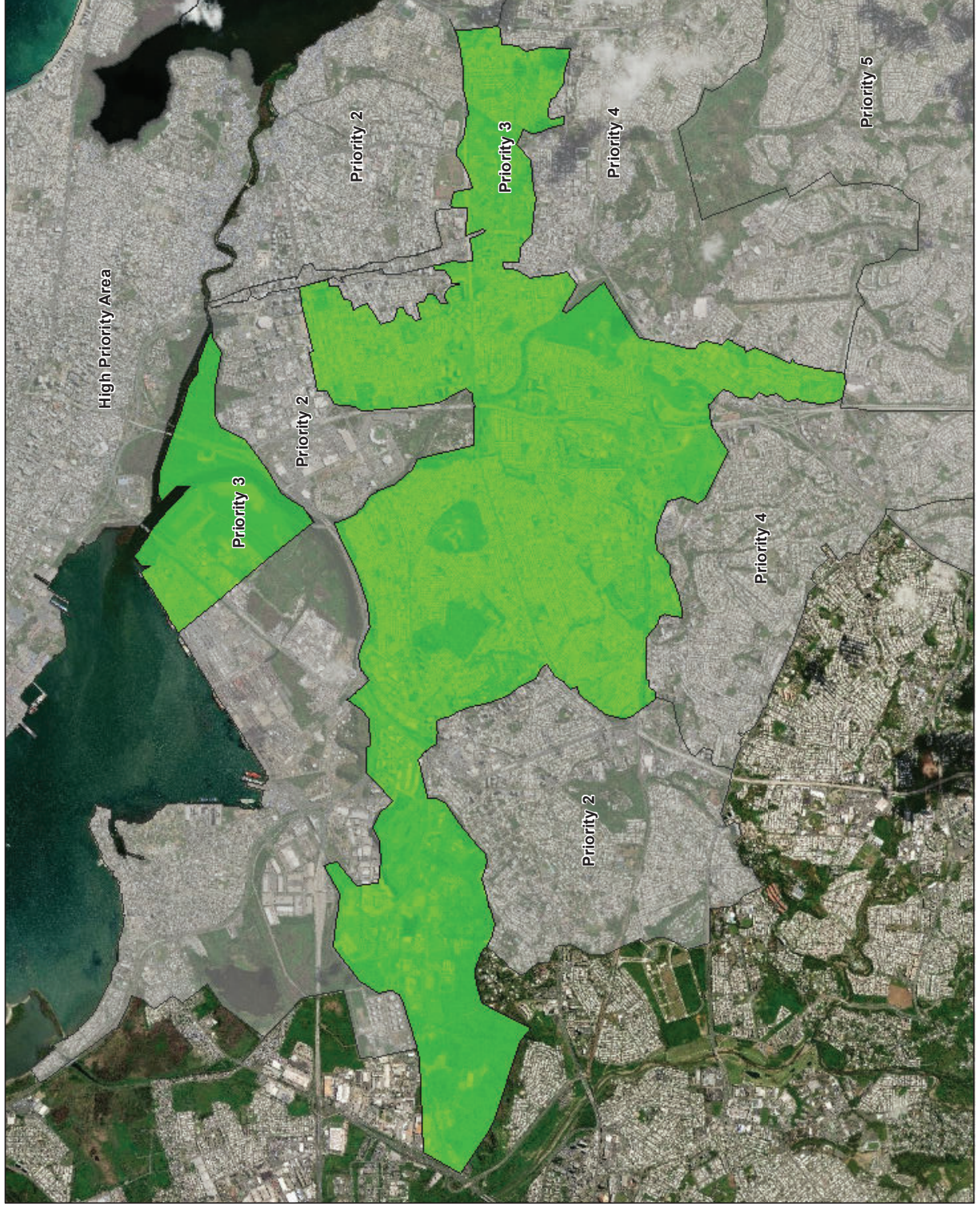
Legend
Project Area
Priority 2
Other Project Areas

Service Layer Credits: Source: Esri, Maxar, GeoEye, Earthstar Geographics, CNES/Airbus DS, USDA, USGS, AeroGRID, IGN, and the GIS User Community
Sources: Esri, HERE, Garmin, USGS, Intermap, INCREMENT P, NRCan, Esri



Priority 2
Priority Areas
Puerto Nuevo RWWTP
Collection System





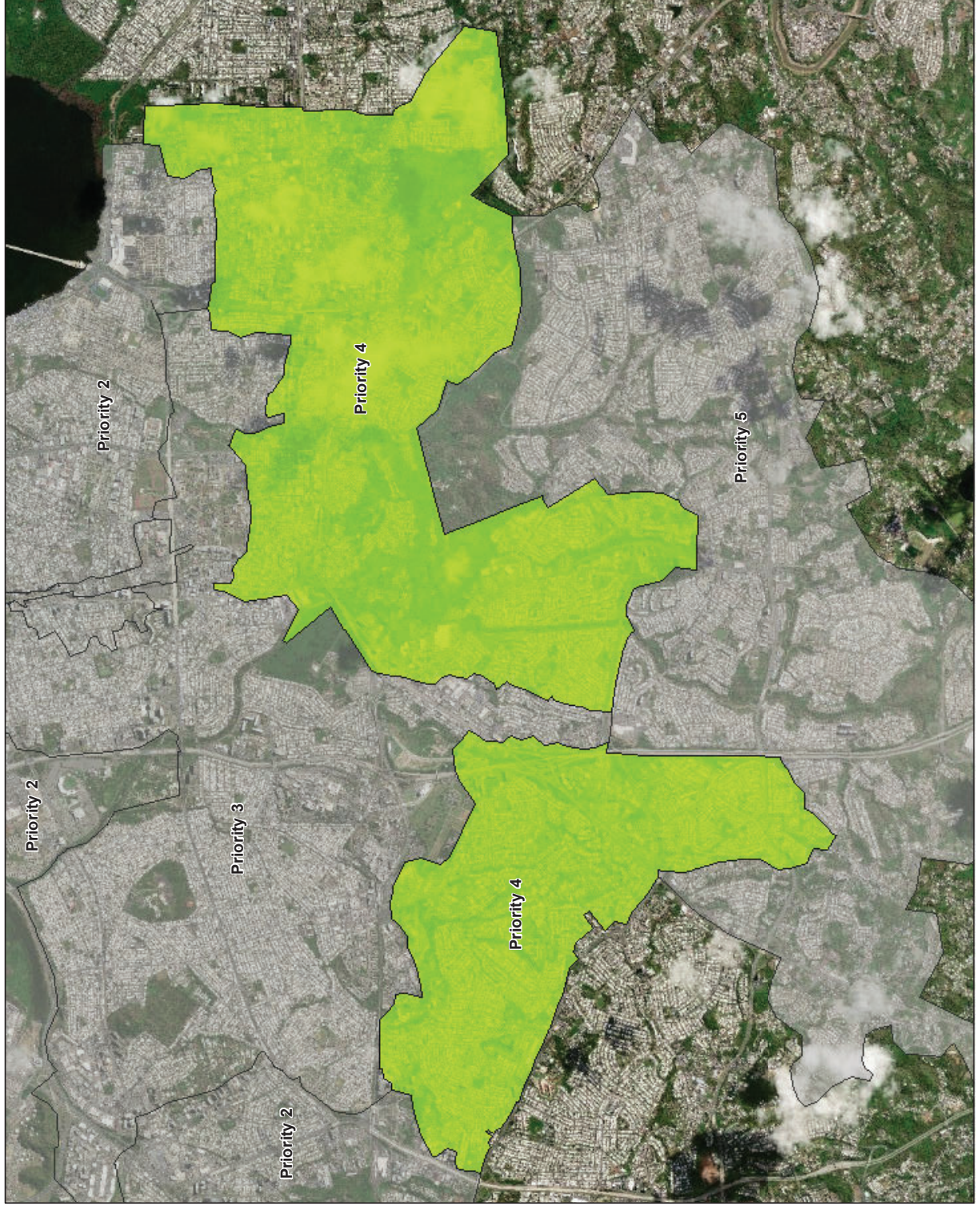
Legend
Project Area
Priority 3
Other Project Areas

Service Layer Credits: Source: Esri, Maxar, GeoEye, Earthstar Geographics, CNES/Airbus DS, USDA, USGS, AeroGRID, IGN, and the GIS User Community
Sources: Esri, HERE, Garmin, USGS, Intermap, INCREMENT P, NRCan, Esri



Priority 3
Priority Areas
Puerto Nuevo RWWTP
Collection System



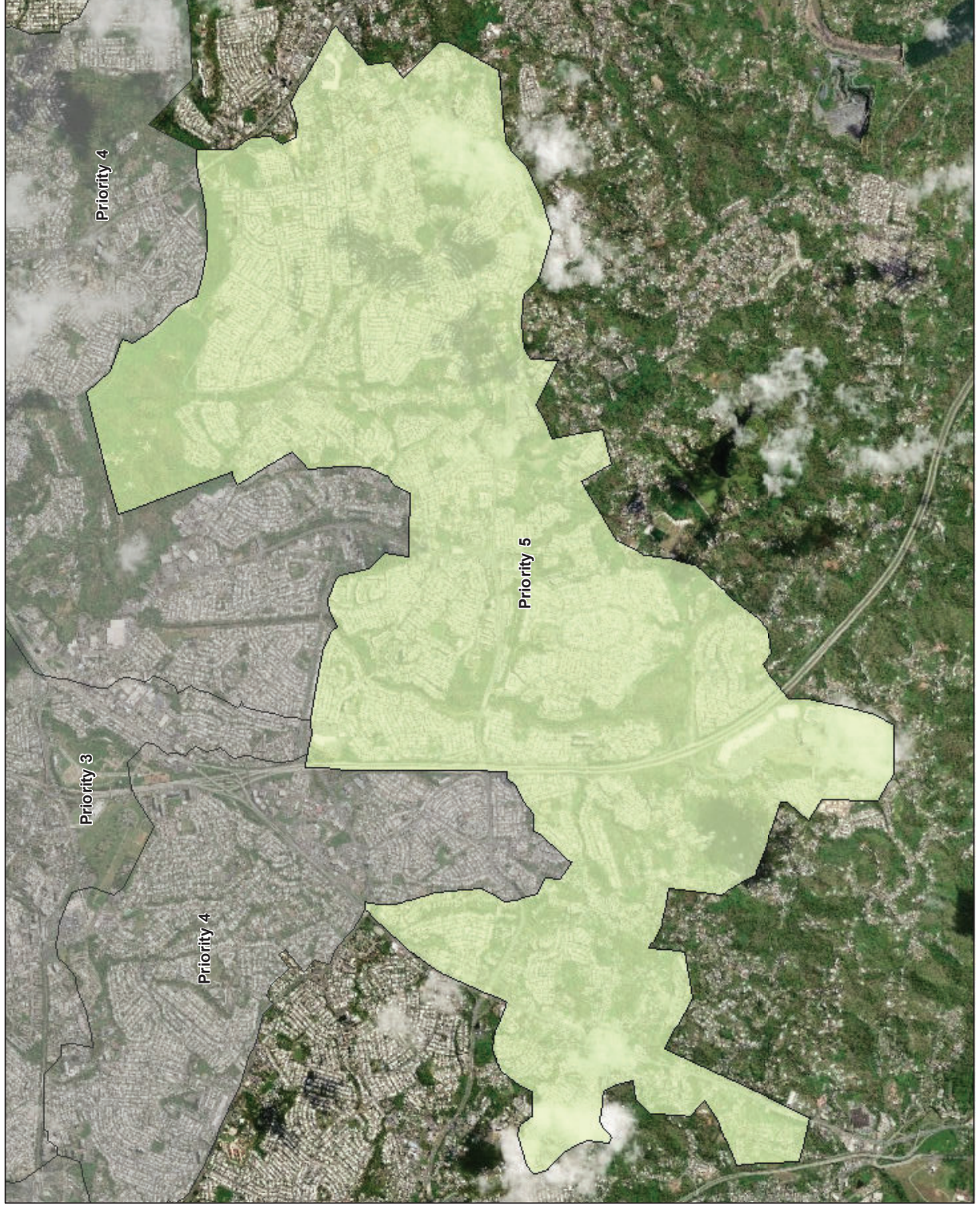


Legend
Project Area
Priority 4
Other Project Areas

Service Layer Credits: Source: Esri, Maxar, GeoEye, Earthstar Geographics, CNES/Airbus DS, USDA, USGS, AeroGRID, IGN, and the GIS User Community
Sources: Esri, HERE, Garmin, USGS, Intermap, INCREMENT P, NRCan, Esri



Priority 4
Priority Areas
Puerto Nuevo RWWTP
Collection System



Legend
Project Area
Priority 5
Other Project Areas

Service Layer Credits: Source: Esri, Maxar, GeoEye, Earthstar Geographics, CNES/Airbus DS, USDA, USGS, AeroGRID, IGN, and the GIS User Community
Sources: Esri, HERE, Garmin, USGS, Intermap, INCREMENT P, NRCan, Esri



Priority 5
Priority Areas
Puerto Nuevo RWWTP
Collection System



APPENDIX 5

Appendix 5

Sewer Defect Repair and Reinspection Criteria

In accordance with Section IX, Paragraph 27, of the Consent Decree, as modified pursuant to the First Modification of Consent Decree, PRASA shall use these Sewer Defect Repair and Reinspection Criteria as the primary means of determining the relative priority of the repair or replacement for each sewer defect that hinders or may hinder the operation of the Sewer System that is discovered during the Sewer System Reconnaissance or during other sewer inspections and/or investigations.

1. The sewer defects will be addressed in accordance with the following priority (See also Table 1 below):

- Active SSO, DWO or Unauthorized Release

The first sort criterion is whether the defect is causing an active SSO, DWO or Unauthorized Release. All defects causing an active SSO, DWO or Unauthorized Release will be prioritized for repair/replacement.

- Overall Risk

Risk is the second sort criterion and will be applied in order of decreasing values. Risk will be assessed as the sum of the Criticality, High SSO Density, Location at Area of Concern, and Asset Prioritization Plan Risk Location criteria values. See Table 1 below for calculation of overall risk.

- Site Complexity

Site Complexity is the third sort criterion and will be applied in order of increasing values. Site complexity will be assessed as the sum of criteria values for Roadway Type, Pipe Diameter, and Pipe Depth. The higher the value, the higher the relative complexity among the sewer repairs that are being considered. See Table 1 below for calculation of site complexity.

- Surcharge Condition

Whether a surcharge condition exists is the fourth sort criterion. When a sewer segment that requires repairs is experiencing surcharge conditions, it is necessary to eliminate the surcharge by cleaning the sewer or taking other remedial measures prior to proceeding directly to repair. Precedence will be given to sewer defects that do not require elimination of a sewer surcharge condition in order to complete the repair.

2. A sewer system defect that is not scheduled to be corrected within one year of being identified will be re-inspected on a regular basis, until the repair is implemented, to monitor the defect and take responsive action based on the decision process described herein. The frequency of re-inspection shall turn on the nature of the defect and shall be no less often than once per year. The schedule for repair/replacement and reinspection is governed by

Appendix 5

Sewer Defect Repair and Reinspection Criteria

Paragraph 27 of the Consent Decree as modified pursuant to the First Modification of Consent Decree.

3. The flow diagram included in Figure 1 to this Appendix will be used to manage sewer defect repair/inspection/investigation.

Table 1 - Description of Criteria

Criteria	Values	Description
Active SSO, DWO or Unauthorized Release	1 = active SSO, DWO or Unauthorized Release 0 = no active SSO, DWO or Unauthorized Release	This is the first sorting filter. Defects causing an active SSO, DWO or Unauthorized Release will be addressed first.
Criticality (Cr)	1 = Low 2 = Average 3 = High	This criterion is used to account for the perceived severity of the defect and likelihood and magnitude of the occurrence of an SSO, DWO or Unauthorized Release as a result of the sewer system defect.
High SSO Density (SSO)	0 = Outside of High SSO Density Area 1 = Inside of High SSO Density Area	This criterion is used to account for the environmental and community impacts of recurring SSOs in an area.
Location at AOC (AOC)	0 = Outside of Area of Concern 1 = Inside of Area of Concern	This criterion is used to account for the increased focus placed by the U.S. Environmental Protection Agency/U.S. Department of Justice and PRASA in a given area as a result of citizen complaints.
APP Risk Location (APP)	1 = Low 2 = Average 3 = High	This criterion is used to account for the likelihood and consequence of failure of a sewer system asset as established with input from a multi-departmental group during the development of the Asset Prioritization Plan.

Appendix 5

Sewer Defect Repair and Reinspection Criteria

Table 1 - Description of Criteria

Criteria	Values	Description
Risk (Cr+SSO+AOC+APP)	2 = Lowest Risk 8 = Highest Risk	The Risk criterion is the sum of the values for the Criticality, High SSO Density, Area of Concern, and Asset Prioritization Plan criteria. The higher the value, the higher the relative risk among the sewer defects evaluated. Risk is the second filter in the sewer defects prioritization process.
Roadway (R)	0 = Streets 1 = Avenues	This criterion is used to account for the anticipated increased complexity of performing underground work in an Avenue, which tend to have more traffic lanes, higher speed limits, more vehicular traffic, and increased number of subsurface utilities versus a Street.
Diameter (D1)	If Diam <15", then = 0 If Diam ≥15", then = 1	This criterion is used to account for the anticipated increased complexity of installing larger-diameter pipe versus smaller-diameter pipe. A threshold diameter equal to or greater than 15 inches was selected because most pipes in the Puerto Nuevo RWWTP sewer system have a diameter of less than 15 inches.
Depth (D2)	If Depth <5 ft, then = 0 If Depth ≥5 ft, then = 1	This criterion is used to account for the anticipated increased complexity of installing sewers at depths equal to or greater than 5 ft versus shallower depths.
Site Complexity (R+D1+D2)	0 = Lowest Complexity 3 = Highest Complexity	The Site Complexity criterion is the sum of the values for the Roadway, Diameter, and Depth criteria. The higher the value, the higher the relative complexity among the sewer repairs that are being considered. Site Complexity is the third filter in the sewer defects prioritization process.

Appendix 5

Sewer Defect Repair and Reinspection Criteria

Table 1 - Description of Criteria

Criteria	Values	Description
Surcharge Condition	1 = Sewer surcharge is not evident in photo. 0 = Sewer surcharge is evident in photo.	This criterion is used to account for the added coordination that would be necessary in advance of the sewer repair work to eliminate the sewer pipe surcharge conditions and the increased degree of uncertainty in the sewer defect identification and internal pipe conditions resulting from the surcharge condition. Surcharge condition is a quick action item used as a fourth filter to assign precedence to sewer defect repairs.

Appendix 6 Sewer Defect Repair and Reinspection Criteria

